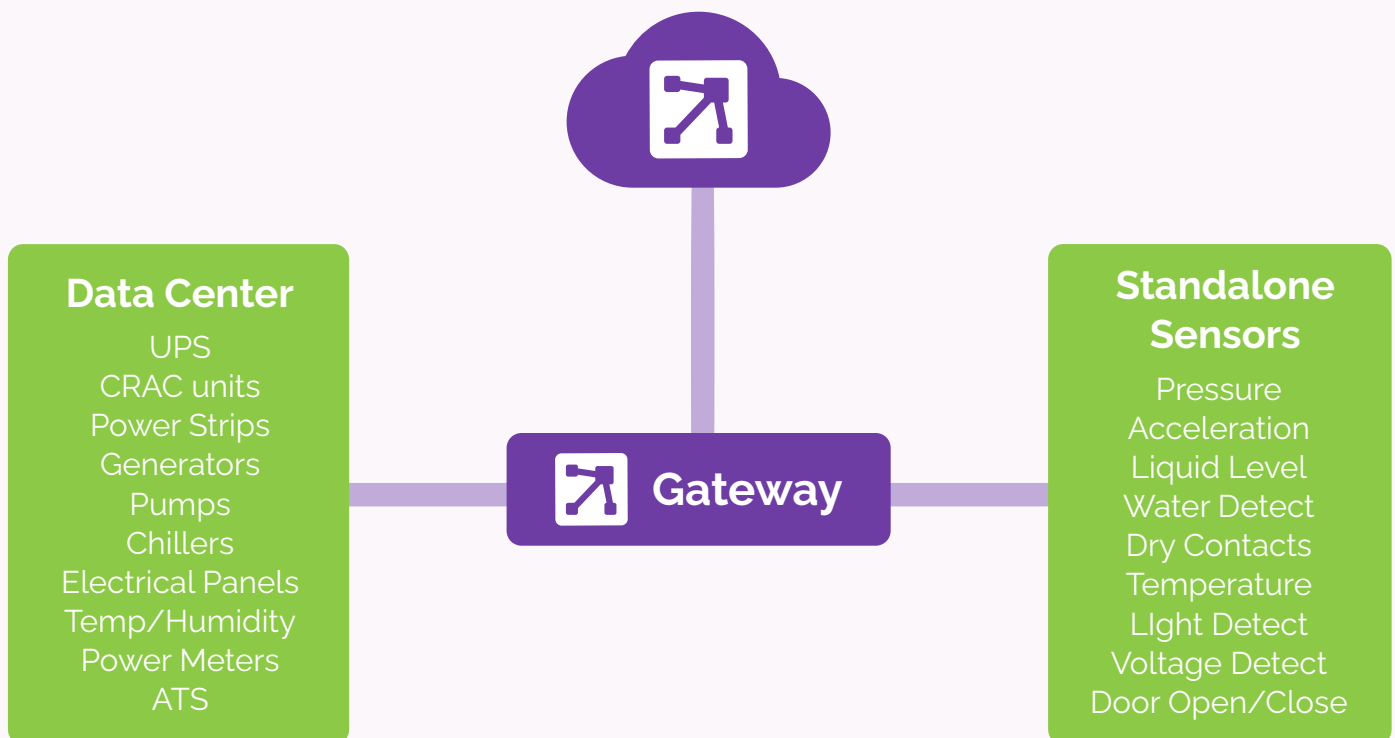


# Why Critical Labs

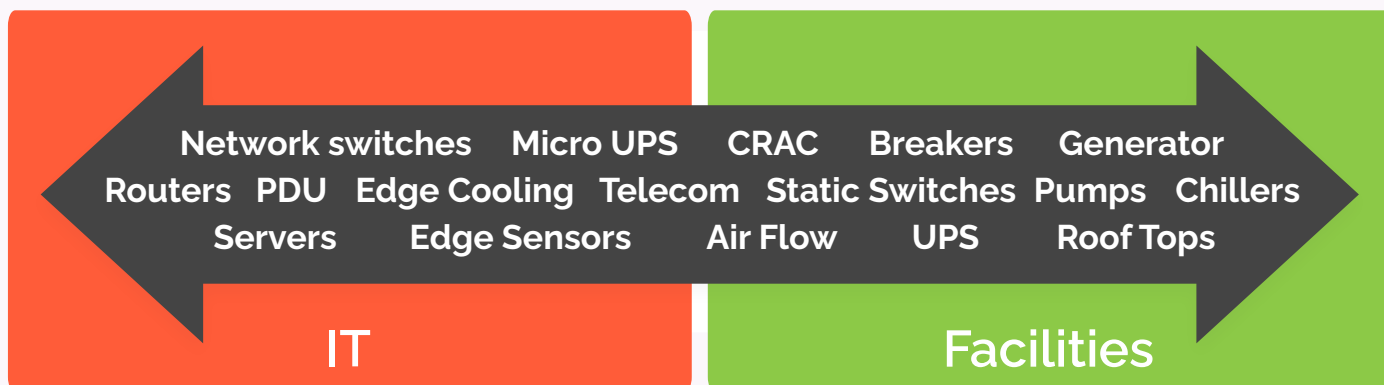
We built Critical Labs to help converging departments work together; critical infrastructure and IT. As these departments continue to depend on each other, it is most important for them to be able to work together seamlessly. They need to communicate effectively within and outside their organization, obtain relevant information in a timely fashion, view that information and share that information.



Since Critical Labs is secure and cloud-based, these departments may work together to prevent problems and resolve problems by anyone (internal and external resources), from anywhere via any device. As the Internet of Things (IoT) continues to expand into your environment, Critical Labs helps ensure your organization functions at the highest level of efficiency for years to come.

# Key Features

## Broad Connectivity



Secure

Anytime, anywhere views

Mobile-friendly

Intuitive, purpose-created views

Add views in seconds, designate who sees what

Pinpoint problems quickly and share with others

Integrate to helpdesk/ticketing

Not tied to a manufacturer

Easy deployment

Near instant problem detection with visual analysis

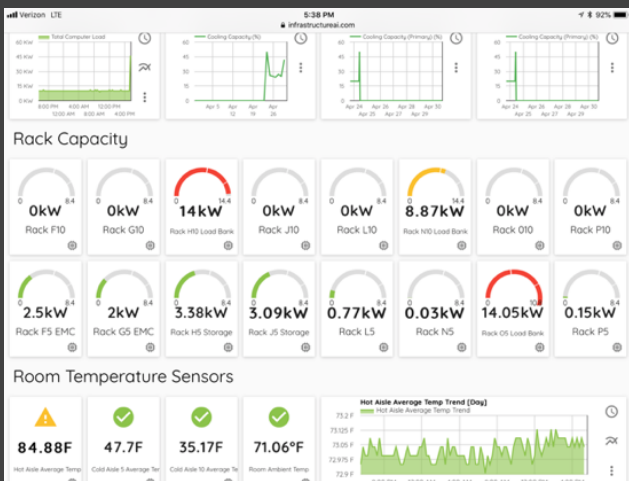
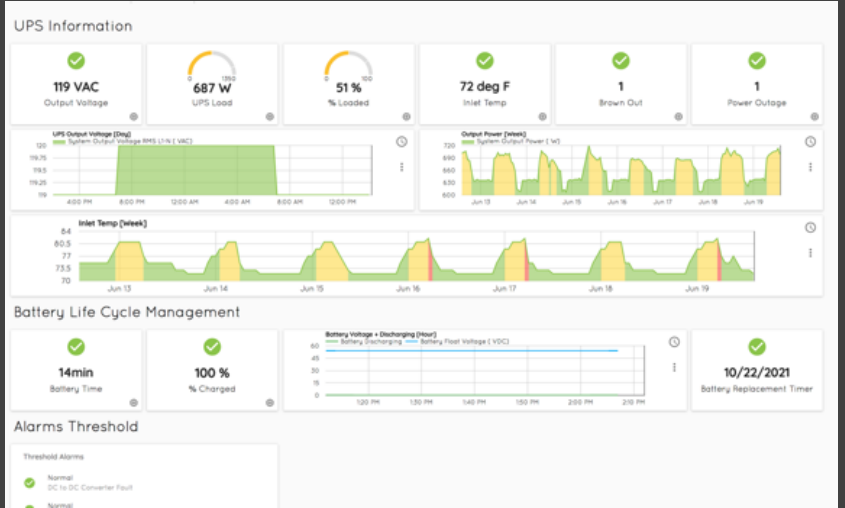
Email and text alerts

Timers with email and text alerts

Overlays, schematics, and 3D graphics

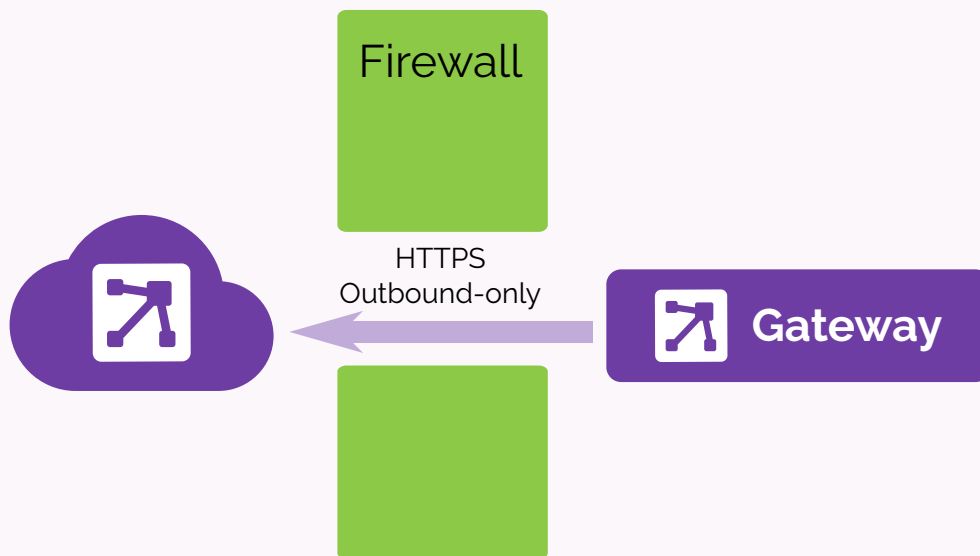
Notes

# Examples



# Security

Security is an integral focus of Critical Labs' development and implementation. Although no security program can make guarantees in today's dynamic climate, the Critical Labs approach to protecting customer assets is quite comprehensive—incorporating a complement of technology, processes and people. This document provides an explanation of each of these three components. Additional information, including technical documentation, is available in Critical Labs' *Security White Paper*.



Critical Labs has a systematic process for implementation of its solution. The purpose is to preserve the integrity of the Critical Labs brand, and to ensure best practices are followed to secure the customer data and help protect assets in the customer environment. Technical items of the implementation process are fully detailed in Critical Labs' *Technical On-boarding Guide*.